



*Solutions for a Cleaner Environment*



# ET Series

**The Most Reliable Undercounter**

**Available with pumped drain & tank heat  
Perfect for restaurants, bars, and fast food operations**



## STANDARD FEATURES

- Easy to load and unload
- Short door length (10") keeps the aisle open and clear
- Dual screens protects wash pump from debris
- Small footprint fits most applications



**Ergonomic Design**



**Screens**



**Pumped Design**



## Optional Heat

Maintains tank temperature rack after rack.

# ET Series

The Economical Answer to Your Warewashing Needs

## Standard Features

- 1 ½ HP wash pump
- Sustainer heater helps maintain tank temperature between loads
- On board chemical pumps included
- Pumped drain – up to 20" high & 5' away
- Tall version available
- Available glass ware cross arm

## ET Series Specifications

U.S. REGISTERED PATENTS

### ET Series

90 second cycle standard 120 & 150 second timers available

Rated Capacity (Racks/Hr.)	30	24	20
Wash Time (Sec.)	45	60	75
Rinse Time (Sec.)	30	45	60
Dwell (Sec.)	15	15	15
Total Cycle Time (Sec.)	90	120	150

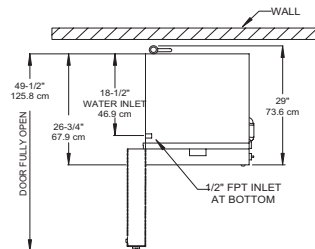
Water Temperature (Supply) . . . . . 120 F Min. (49° C Min)  
 Water Consumption (Per Cycle) . . .1.7 Gal. (6.4 Liter) NSF  
 Motor (Pump) . . . . . 1.5 HP (1.125 Kw)  
 Sustainer Heater . . . . . 1/20 HP (0.37 Kw) 1/2 Kw  
 Electrical Ratings . . . . . 115 Vac 20 Amp Breaker  
 50/69 Hz, 1 Phase

Connect to Supply Sources using 10-12 AWG copper wires using non-time delay fuse of 20 amp rating or 20 amp circuit breaker.

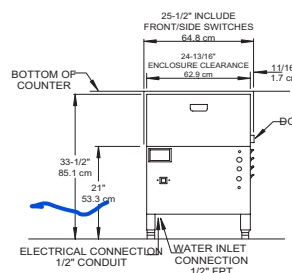
Rack Size . . . . . 19.75" x 19.75" (50.2 cm x 50.2 cm)  
 Door Clearance ("M" Series) . . . 11" x 22.25" (27.9 cm x 56.5 cm)  
 Door Clearance ("3" Series) . . . 14" x 22.25" (35.8 cm x 56.5 cm)  
 Water Inlet . . . . . 0.5" FPT  
 Drain (Scrap Trap) . . . . . 0.75" I.D. Hose by 60" Long  
 Pump-Out Height (Maximum) . . . . . 20" (50.8 cm)  
 Height of Standard ET . . . . . 33.5" Min - 34.5" Max  
 (85.1 cm Min - 87.6 cm Max)  
 Height of ET-AF-3 . . . . . 36.5" Min - 37.5" Max  
 (92.7 cm Min - 95.2 cm Max)  
 Width (Overall) . . . . . 25.5" (64.8 cm)  
 Depth (Overall) . . . . . 29" (73.6 cm)  
 Shipping Weight ("M" Series) . . . . . 270 lb. (122.5 kg)  
 Shipping Weight ("3" Series) . . . . . 274 lb. (124.3 kg)  
 Shipping Dimensions ("M" Series) . . . . . 36" L x 36" W x 41" H  
 Shipping Dimensions ("3" Series) . . . . . 36" L x 36" W x 44" H



Need a free standing warewashing center in only 48" of space? Combine our ET-AF under-counter with our stainless steel table package.

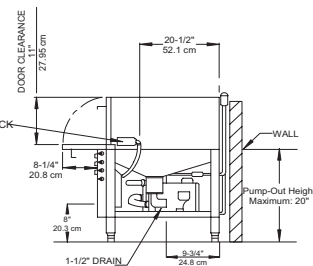


TOP VIEW



FRONT VIEW

Effective: 4/16



SIDE VIEW

### CAUTION:

Electrical and Plumbing connections must be made by a qualified Service Person who will comply with all available federal, state, and local Health, Electrical, Plumbing, and Safety Codes.

Manufacturer reserves the right to modify these specifications in compliance with regulatory agencies and manufacturing expediency.

### Note:

All dimensions listed have a tolerance of (+) or (-) 1/8" unless otherwise noted.

**Warning:** Cancer and Reproductive Harm - [www.P65Warnings.ca.gov](http://www.P65Warnings.ca.gov)

[www.alco-chem.com](http://www.alco-chem.com)

NORTH: 45 N Summit Street, Akron, OH 44308 | Hours: M-F, 8:00-4:30 | PH: 330.253.3535 | 1.800.589.2526

SOUTH: 1303 Park Avenue SW, Canton, OH 44706 | Hours: M-F, 8:00-4:30 | PH: 330.833.8551 | 1.800.437.5248