



## POT & PAN CHEMICAL SANITIZING CORNER DISHWASHER

### S-C

Scullery  
Low Temperature  
Dishmachine



### FEATURES

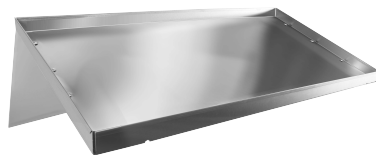
- 40 racks / 160 covers per hour.
- All stainless steel construction assures long life and years of trouble free operation.
- Unique spray arm system features upper and lower stainless steel wash arms with reinforced end caps. Specially designed pull-pins allow wash arms to be easily removed for cleaning.
- Pump purging system improves results by eliminating soil and chemical carryover during rinse cycle.
- Top mounted controls include built-in chemical pumps and delimiting system that assures proper chemical usage.
- Auto start/stop makes operation safe and easy.
- Large 27" high door opening accommodates larger items and utensils.
- Integrated scrap tray prevents food soil from entering drain system.
- Stainless steel impeller offers extended life and service.
- Built-in strainer in water inlet to prevent water valve from logging.

### CMA MODEL: S-C

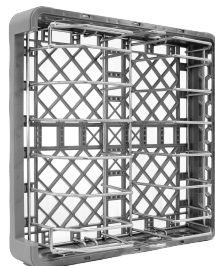


**Temp-Sure**  
(Self contained 12kW heater)

Temp-Sure™ heater assures a continuous supply of 140° F hot water that guarantees excellent results.



**Universal Slant Shelf**  
27"-42"



**Sheet Pan Rack**

### AVAILABLE OPTIONS

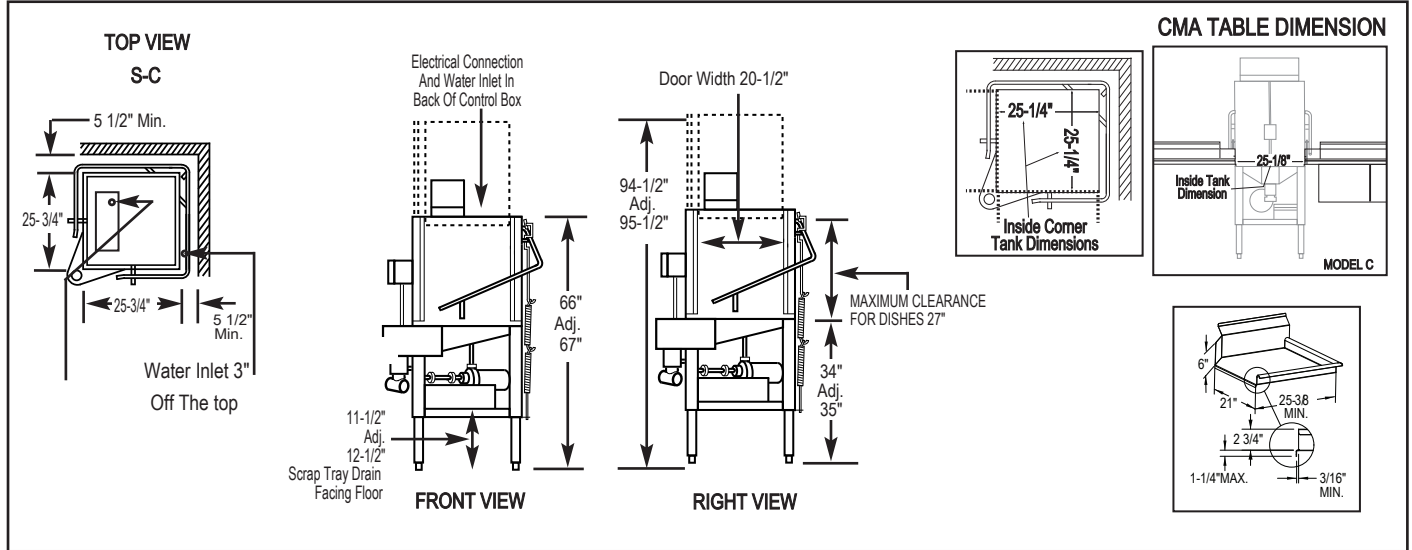
- Solid/Powder Dual Bowl Dispenser
- Low Chemical Alarm
- Stainless Steel Dishtables
- Alternative Cycle Times
- Alternative Electrical Available for Export
- Stainless Steel Scrap Trap in lieu of Poly Pro



**S-C**  
Chemical Sanitizing  
Pot & Pan Single Rack  
Dishwasher

**WARNINGS:**

- Plumbing connections must be made by a qualified service company who will comply with all available Federal, State, and Local Health, Plumbing and Safety codes.
- CMA recommends utilizing a water softening system to maintain water hardness measurements of 3.5 gpg (grains per gallon) or less. This will assure maximum results and optimum operation of the dishmachine.



**Specifications:**

	USA	METRIC		USA	METRIC	
<b>OPERATING CAPACITY</b>			<b>WASH PUMP MOTORS HP</b>	1	1	
RACKS PER HOUR (NSF RATED)	40	40	<b>DIMENSIONS</b>			
<b>OPERATING CYCLE</b>				DEPTH	25-3/4"	(65.4cm)
WASH TIME-SEC	45	45		WIDTH (OUTSIDE DIMINSION)	25-3/4"	(65.4cm)
RINSE TIME-SEC	30	30		HEIGHT	66"-67"	(168-170cm)
DWELL TIME-SEC	15	15		STANDARD TABLE HEIGHT	34"	(86cm)
TOTAL CYCLE TIME	90	90		MAXIMUM CLEARANCE FOR DISHES	27"	(68.5cm)
WASH TANK CAPACITY	1.7 GAL.	(6.43 L)		DRAIN CONNECTION (OFF FLOOR)	11-1/2"-12-1/2"	(29.2cm-31.7cm)
PUMP CAPACITY	68 GPM	(257 LPM)	<b>STANDARD DISHRACK DIMENSIONS</b>	1 20" x 20"	1 (50.8 X 50.8cm)	
<b>OPERATING TEMPERATURE</b>			<b>ELECTRICAL RATING</b>	<b>VOLTS</b> 115	<b>AMPS</b> 16	
REQUIRED	120°F	(49°C)	<b>APPROXIMATE SHIPPING WEIGHT</b>	299#	(135.6kg)	
RECOMMENDED	140°F	(60°C)	<b>SHIPPING DIMENSIONS</b>	PALLET & BOX @ 41" X 41" X 80"		
<b>WATER CONSUMPTION</b>						
PER RACK	1.7 GAL.	(6.43 L)				
PER HOUR	68 GPH	(257.4 LPH)				
<b>WATER REQUIREMENTS</b>						
WATER INLET	3/4"	(1.9cm)				
DRAIN-I.P.S.	2"	(5.1cm)				

**Summary Specifications: Model S-C**

CMA Energy Mizer model S-C low temperature, chemical sanitizing commercial dishwasher meets NSF and UL sanitation and construction standards WITHOUT the use of BOOSTER or TANK HEATERS. The model S-C is constructed entirely of stainless steel. Each unit automatically washes, rinses and sanitizes food service utensils in standard 19-3/4" x 19-3/4" racks and accommodates oversized plates and utensils with a 27" high door clearance. Unit comes standard with upper and lower stainless steel wash arms. The model S-C incorporates a pump purging system that improves results by eliminating soil and chemical carryover during rinse cycle. **Note: This machine does not have built-in heaters, therefore produces no steam.**

**Available Models:**    ■ S-AH Straight    ■ S-C Corner    ■ S-B

**Advisory:** CMA does NOT endorse "Tankless On-Demand" water heaters for use on CMA Dishmachine products. CMA DOES endorse, and highly recommends, the standard "tank" style water heaters, sized properly to handle each particular facility with their water heating requirements.



[www.alco-chem.com](http://www.alco-chem.com)

NORTH: 45 N Summit Street, Akron, OH 44308 | Hours: M-F, 8:00-4:30 | PH: 330.253.3535 | 1.800.589.2526  
SOUTH: 1303 Park Avenue SW, Canton, OH 44706 | Hours: M-F, 8:00-4:30 | PH: 330.833.8551 | 1.800.437.5248