



CHEMICAL SANITIZING DOUBLE RACK CORNER DISHWASHER

CB

Low Temperature Double Rack Dishwasher



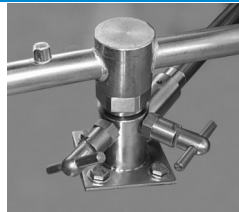
FEATURES

- 80 racks / 320 covers per hour.
- Large 20-1/2" clearance for dishes.
- Economical to operate. Uses as little as .97 gallons of water per rack.
- All stainless steel construction assures long life and years of trouble free operation.
- Unique spray arm system features upper and lower stainless steel wash arms with reinforced end caps.
- Top mounted controls include built-in chemical pumps and deliming system that assures proper chemical usage.
- Auto start/stop makes operation safe and easy.
- Built-in Poly Pro scrap accumulator with all stainless steel drawer prevents food soil from entering drain system.
- Water inlet comes with built-in strainer, prevents debris from clogging the water valve.
- Dishmachine comes with 2 dishracks.
- Stainless steel impeller offers extended life and service.
- Stainless Steel scrap tray, long lasting.

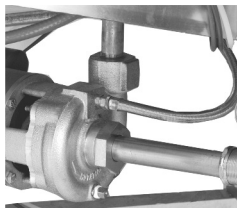
CMA MODEL: CB



Low Chemical Alarm is an audible alarm and warning light feature that gives a warning when sanitizer product is nearly empty.



Unique pull-pin design allows wash arms to be easily removed for cleaning.



Pump purging system improves results by eliminating soil and chemical carryover during rinse cycle.

AVAILABLE OPTIONS

- Solid/Powder Dual Bowl Dispenser
- Temp-Sure heater assures a continuous supply of 140°F hot water guarantees excellent results. Requires a separate 208-240v 3 phase 40 amp power supply.
- Alternative Cycle Times
- Alternative Voltages Available
- Stainless Steel Tables
- Stainless Steel Scrap Trap in lieu of Poly Pro
- Slant Shelf 21"X42"



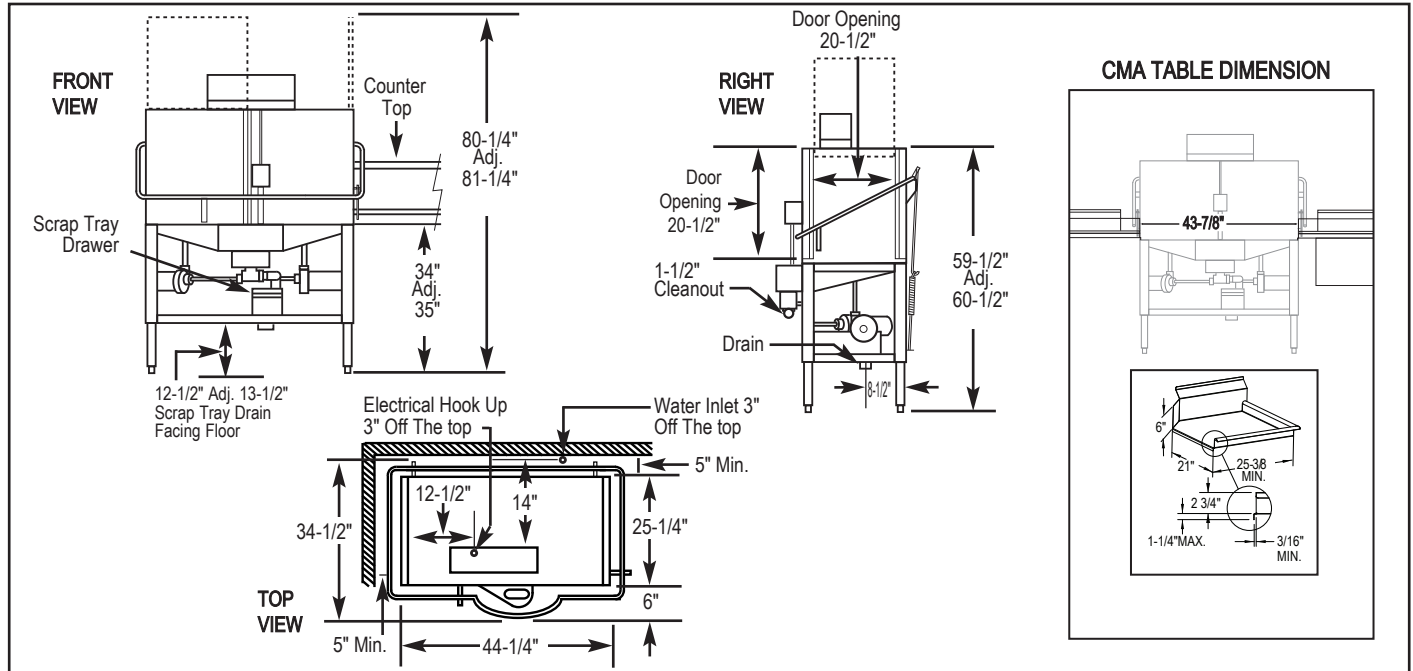


CORNER DOUBLE (CB) ENERGY SAVER (extended wrapper)

Chemical Sanitizing
Double Rack
Corner Dishwasher

WARNINGS:

- Plumbing connections must be made by a qualified service company who will comply with all available Federal, State, and Local Health, Plumbing and Safety codes.
- CMA recommends utilizing a water softening system to maintain water hardness measurements of 3.5 gpg (grains per gallon) or less. This will assure maximum results and optimum operation of the dishmachine.



Specifications:

MODEL CB	USA	METRIC		USA	METRIC
OPERATING CAPACITY			WASH PUMP MOTORS HP (2)	1	1
RACKS PER HOUR (NSF RATED)	80	80	DIMENSIONS		
OPERATING CYCLE			DEPTH	25-1/4"	(64cm)
WASH TIME-SEC	45	45	WIDTH	44-1/4"	(112cm)
RINSE TIME-SEC	30	30	HEIGHT	59-1/2"-60-1/2"	(151.1-153.7cm)
DWELL TIME-SEC	15	15	STANDARD TABLE HEIGHT	34"	(86cm)
TOTAL CYCLE TIME	90	90	MAXIMUM CLEARANCE FOR DISHES	20"	(43cm)
WASH TANK CAPACITY	1.94 GAL.	(7.34 L)	STANDARD DISHRACK DIMENSIONS	20" x 20"	(50.8 x 50.8cm)
PUMP CAPACITY	104 GPM (2 Pumps)	(394 LPM)	ELECTRICAL RATING	VOLTS	AMPS
OPERATING TEMPERATURE				115	22
REQUIRED	120°F	(49°C)	APPROXIMATE SHIPPING WEIGHT	361#	(163kg)
RECOMMENDED	140°F	(60°C)	SHIPPING DIMENSIONS	PALLET & BOX @ 41" X 56" X 70"	
WATER CONSUMPTION					
PER RACK	.97 GAL.	(3.67 L)			
PER HOUR	77.6 GPH	(293.7LPH)			
WATER REQUIREMENTS					
WATER INLET	3/4"	-			
DRAIN-I.P.S.	2"	-			

Summary Specifications: Model CB

CMA Energy Miser model CB low temperature, chemical sanitizing commercial dishwasher meets UL and ETL sanitation and construction standards WITHOUT the use of BOOSTER or TANK HEATERS. The model CB is constructed entirely of stainless steel. Each unit automatically washes, rinses and sanitizes food service utensils in standard 19-3/4" x 19-3/4" racks. Unit comes standard with upper and lower stainless steel wash arms. The model CB incorporates a pump purging system that improves results by eliminating soil and chemical carryover during rinse cycle. **Note: This machine does not have built-in heaters, therefore produces no steam.**

Advisory: CMA does NOT endorse "Tankless On-Demand" water heaters for use on CMA Dishmachine products. CMA DOES endorse, and highly recommends, the standard "tank" style water heaters, sized properly to handle each particular facility with their water heating requirements.



www.alco-chem.com

NORTH: 45 N Summit Street, Akron, OH 44308 | Hours: M-F, 8:00-4:30 | PH: 330.253.3535 | 1.800.589.2526

SOUTH: 1303 Park Avenue SW, Canton, OH 44706 | Hours: M-F, 8:00-4:30 | PH: 330.833.8551 | 1.800.437.5248